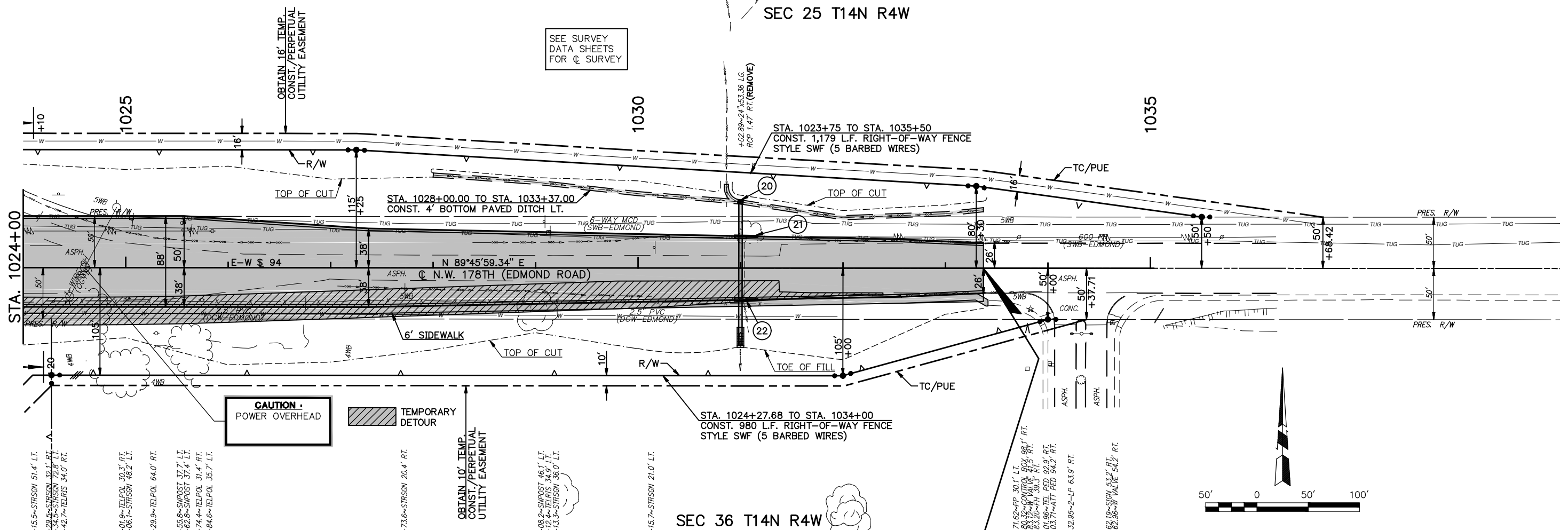
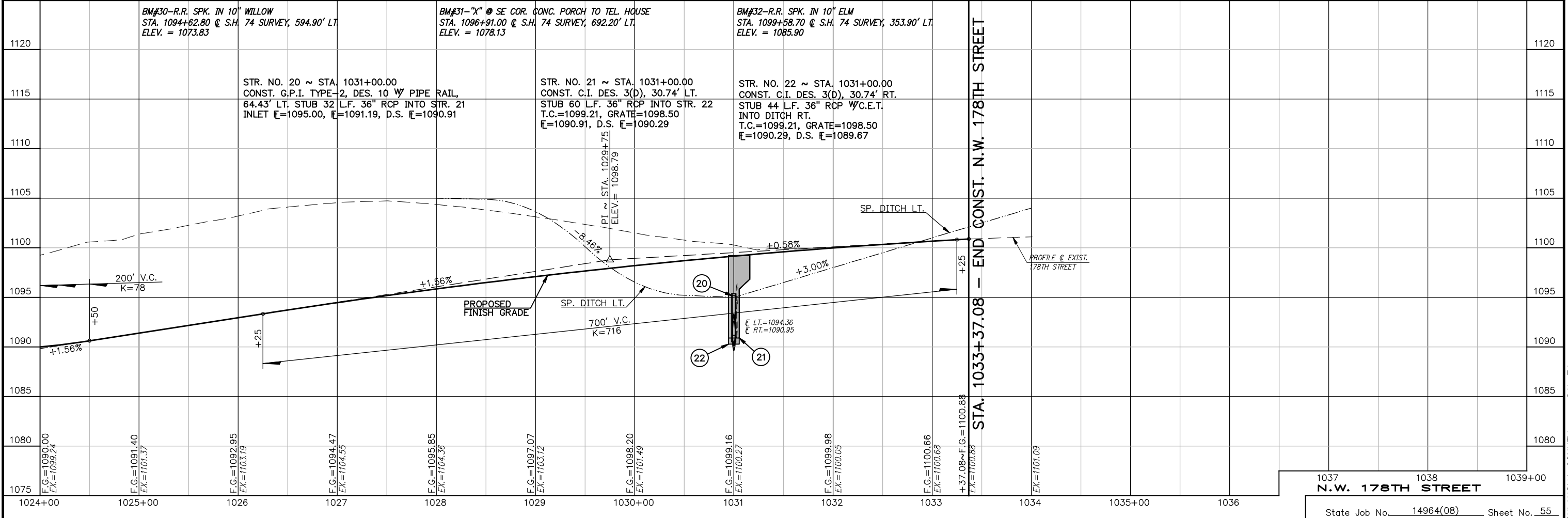


SEC 25 T14N R4W

SEE SURVEY DATA SHEETS FOR Q SURVEY



SEC 36 T14N R4W



BM#30-R.R. SPK. IN 10' WILLOW
STA. 109+62.80 @ S.H. 74 SURVEY, 594.90' LT.
ELEV. = 1073.83

BM#31-X" @ SE COR. CONC. PORCH TO TEL. HOUSE
STA. 1096+91.00 @ S.H. 74 SURVEY, 692.20' LT.
ELEV. = 1078.13

BM#32-R.R. SPK. IN 10' ELM
STA. 1099+58.70 @ S.H. 74 SURVEY, 353.90' LT.
ELEV. = 1085.90

STR. NO. 20 ~ STA. 1031+00.00
CONST. G.P.I. TYPE-2, DES. 10 W PIPE RAIL,
64.43' LT. STUB 32 L.F. 36" RCP INTO STR. 21
INLET E=1095.00, E=1091.19, D.S. E=1090.91

STR. NO. 21 ~ STA. 1031+00.00
CONST. C.I. DES. 3(D), 30.74' LT.
STUB 60 L.F. 36" RCP INTO STR. 22
T.C.=1099.21, GRATE=1098.50
E=1090.91, D.S. E=1090.29

STR. NO. 22 ~ STA. 1031+00.00
CONST. C.I. DES. 3(D), 30.74' RT.
STUB 44 L.F. 36" RCP W/C.E.T.
INTO DITCH RT.
T.C.=1099.21, GRATE=1098.50
E=1090.29, D.S. E=1089.67

STA. 1033+37.08 - END CONST. N.W. 178TH STREET

1037 1038 1039+00
N.W. 178TH STREET